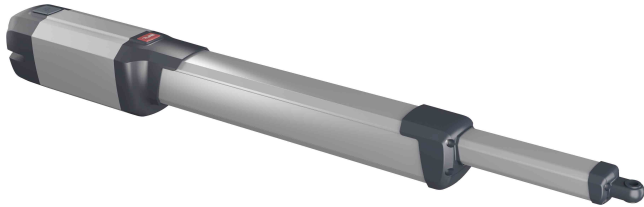


Electromechanical operator for swing gates



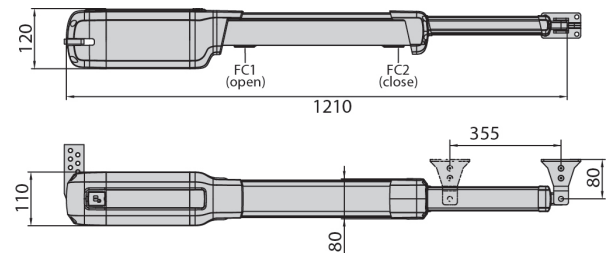
- Range of electromechanical pistons for residential use, suitable for swing gate leaves up to 4 metres wide and weighing up to 500kg.
- Range of operators are telescopic operators with completely covered worm screw. This ensures maximum protection against external agents as well as total protection for people. Preventing any type of access to the moving parts.
- Magnetic pin, an exclusive feature of BFT operators enabling quicker installation steps.



Technical Features

U-Link	No
Control Unit	ZARA BTL2
Board Power Supply	230V
Motor Power Supply	24V
Power Input	40W
Leaf Weight	500kg
Leaf Length	4 metres
Cycle Time	17 sec
Useful Rod Stroke	355mm
Type of Limit Switch	Magnetic
Slowdown	Yes
Locking	Mechanical
Release	Personal Release Key
Frequency of Use	Intensive
Environment Conditions	from -20 °C to 55 °C
Protection Rating	IP44
Actuator Weight	7.7 kg
Impact Reaction	D-Track

Dimensions



Control Panel



* Design and specifications are subject to change without prior notice

Accessories



THALIA
LCD Control Panel



RADIUS B LTA 230 R2
Flashing Light



MITTO B RCB02 R3
Transmitter 2 Channel



BBT BAT
Battery Kit



ERIS A30
Wireless Photocell



B EBA Blue Entry Andriod 4
Blue-Tooth Module