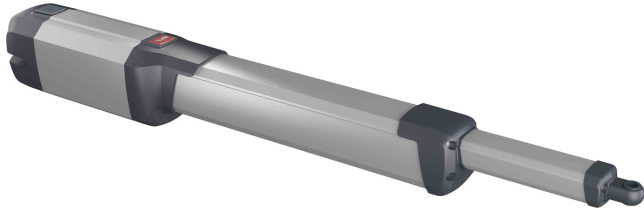


## Electromechanical operator for swing gates



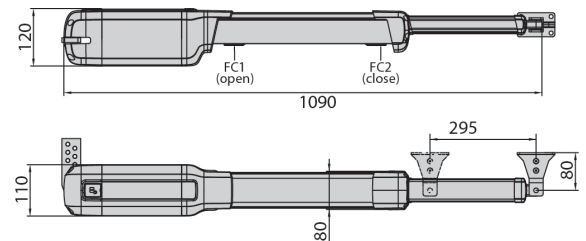
- Range of electromechanical pistons for residential use, suitable for swing gate leaves up to 2.5 metres wide and weighing up to 400kg.
- Range of operators are telescopic operators with completely covered worm screw. This ensures maximum protection against external agents as well as total protection for people. Preventing any type of access to the moving parts.
- Magnetic pin, an exclusive feature of BFT operators enabling quicker installation steps.



### Technical Features

U-Link	No
Control Unit	ZARA BTL2
Board Power Supply	230V
Motor Power Supply	24V
Power Input	40W
Leaf Weight	400kg
Leaf Length	2.5 metres
Cycle Time	13 sec
Useful Rod Stroke	295mm
Type of Limit Switch	Magnetic
Slowdown	Yes
Locking	Mechanical
Release	Personal Release Key
Frequency of Use	Intensive
Environment Conditions	from -20 °C to 55 °C
Protection Rating	IP44
Actuator Weight	5 kg
Impact Reaction	D-Track

### Dimensions



### Control Panel



\* Design and specifications are subject to change without prior notice

### Accessories



THALIA  
LCD Control Panel



RADIUS B LTA 230 R2  
Flashing Light



MITTO B RCB02 R3  
Transmitter 2 Channel



BBT BAT  
Battery Kit



ERIS A30  
Wireless Photocell



B EBA Blue Entry Andriod 4  
Blue-Tooth Module